

Proliferative diabetic retinopathy (PDR)

Category(ies): Retina, Vitreous

Contributor: [Christopher Kirkpatrick, MD](#)

Photographer: Samantha Jacobo

The left eye shows severe neovascularization of the disc (NVD) that extends down along the inferior arcade with tufts of neovascularization elsewhere (NVE) along both the inferior and superior arcades. The right eye had similar findings.



[Enlarge](#)

[Download](#)

Severe Proliferative Diabetic Retinopathy

Posted May 11, 2017

Contributor: Morgan Bertsch, BS and [Tyler B.S. Risma, MD](#) Posted May 11, 2017

This patient is a 32-year-old female with poorly controlled type I diabetes mellitus and severe proliferative diabetic retinopathy. She had not had panretinal photocoagulation at the time of presentation. Eventually this patient developed severe vitreous hemorrhage and traction retinal detachments in both eyes. Optos® widefield fluorescein angiography demonstrates delayed arteriovenous transit time, extensive neovascularization of the disc and huge areas of capillary nonperfusion.



Figure1. Optos® fundus photo, right eye

[Enlarge](#)

[Download](#)



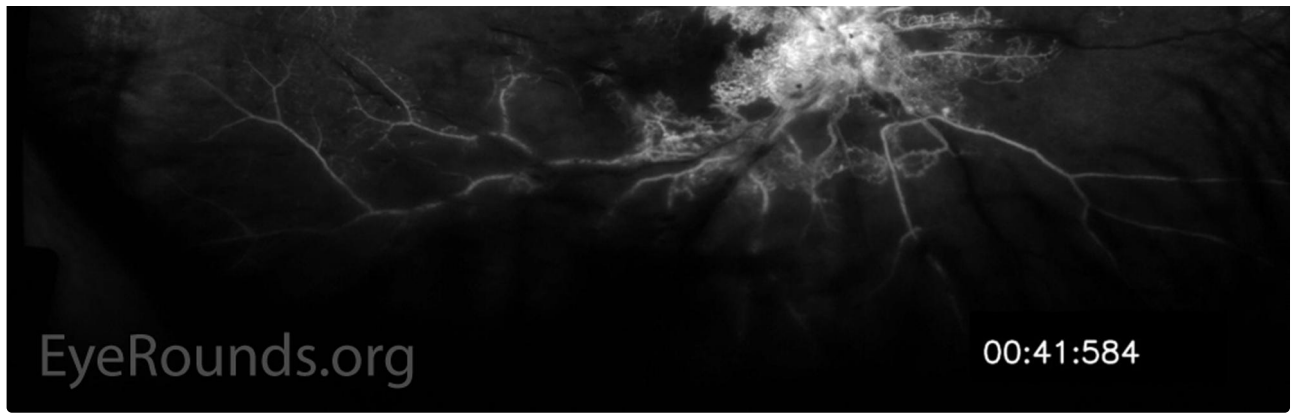


Figure 2. Optos® widefield fluorescein angiography, right eye, at 41 seconds

[Enlarge](#) [Download](#)

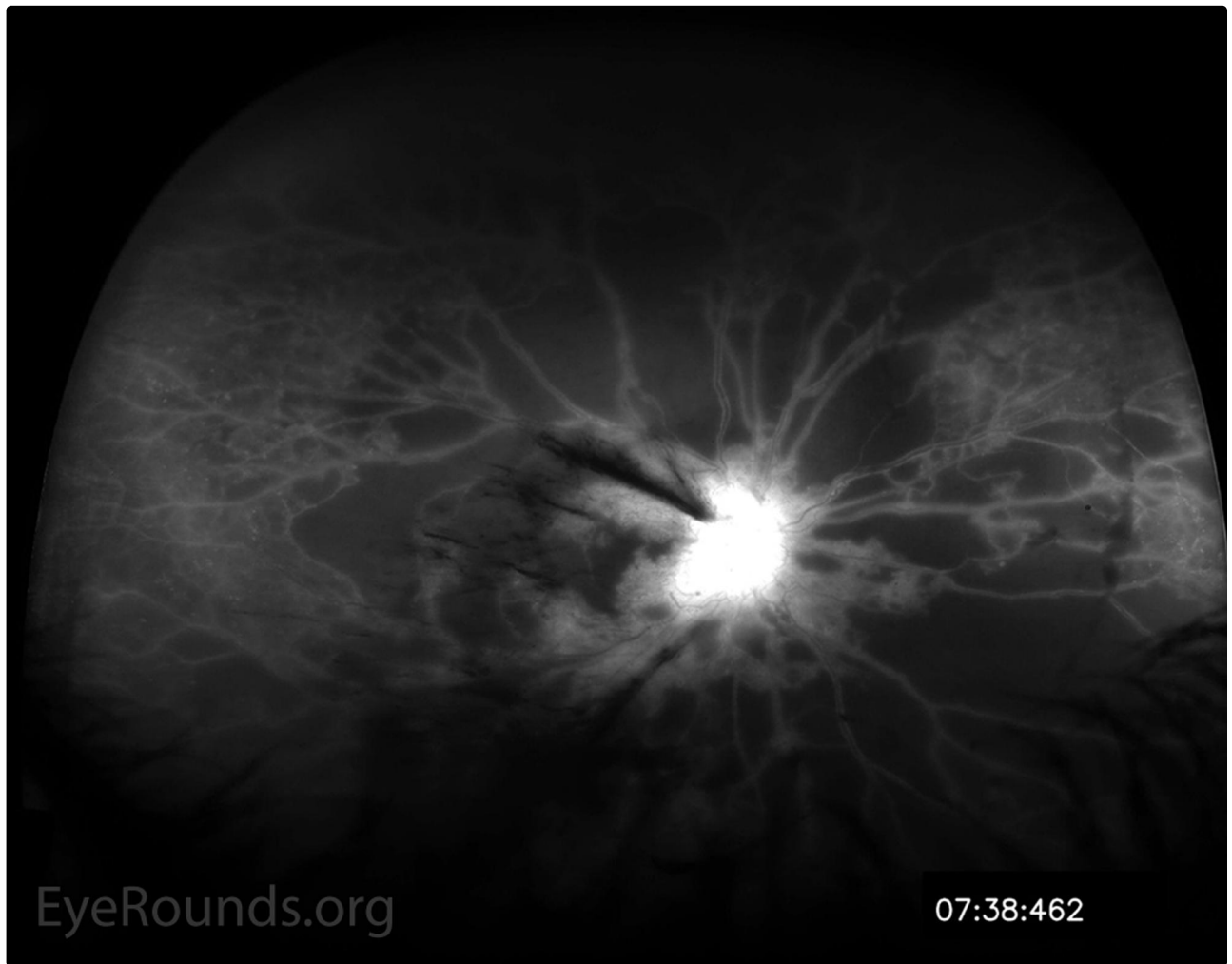


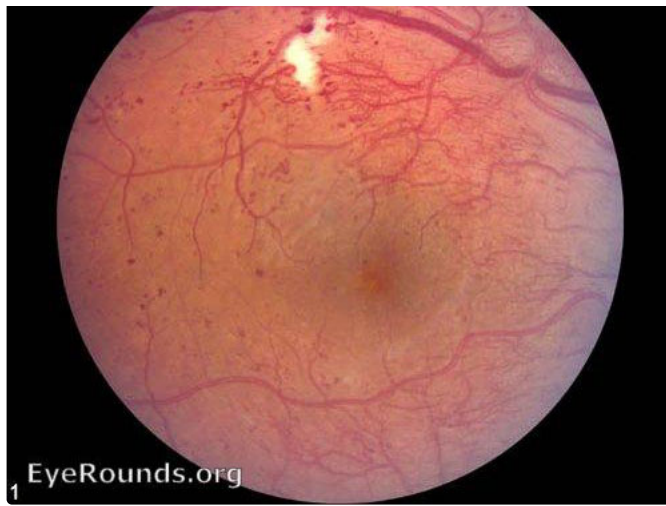
Figure 3. Optos® widefield fluorescein angiography, right eye, at 7 minutes 38 seconds

[Enlarge](#) [Download](#)

Proliferative diabetic retinopathy Contributor: Andrew Doan, MD, PhD, University of Iowa

February 8, 2008





1 EyeRounds.org

Seen are neovascularization, cotton wool spots, microaneurysms, and intraretinal hemorrhages.

[Enlarge](#)

[Download](#)



00:35

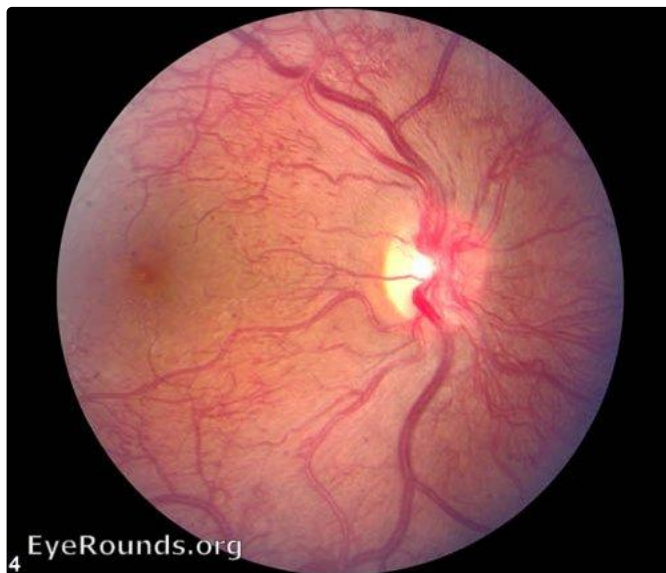
18 EyeRounds.org

Fluorescein angiography showing neovascularization and microaneurysms.

[Enlarge](#)

[Download](#)

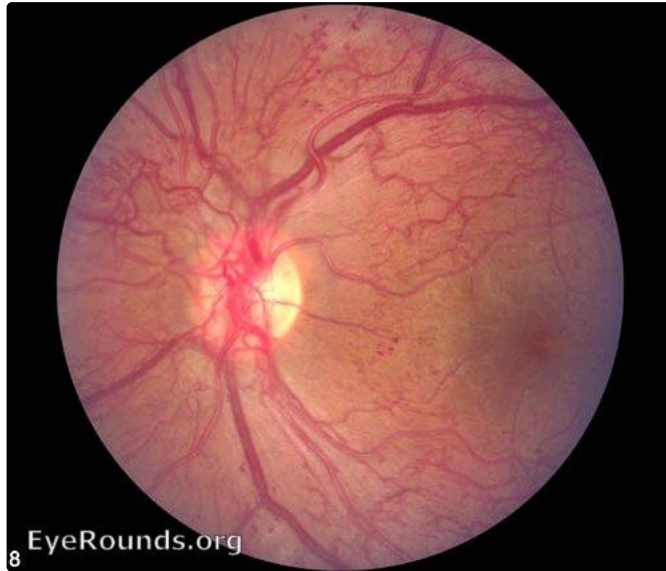
Proliferative diabetic retinopathy - advanced, uncontrolled



4 EyeRounds.org

Enlarge

Download



Enlarge

Download

Image Permissions:



Ophthalmic Atlas Images by EyeRounds.org, The University of Iowa are licensed under a [Creative Commons Attribution-NonCommercial-NoDerivs 3.0 Unported License](https://creativecommons.org/licenses/by-nc-nd/3.0/).



Related Articles



[Related Tutorial: Diabetic Retinopathy](#)

University of Iowa
Roy J. and Lucille A. Carver College
of Medicine
Department of Ophthalmology and
Visual Sciences
200 Hawkins Drive
Iowa City, IA 52242

[Support Us](#)

Copyright © 2019 The University of
Iowa. All Rights Reserved
[Report an issue with this page](#)
[Web Privacy Policy](#) |
[Nondiscrimination Statement](#)

[Cataract Surgery for Greenhorns](#)
[EyeTransillumination](#)
[Gonioscopy.org](#)
[Iowa Glaucoma Curriculum](#)
[Iowa Wet Lab](#)
[Patient Information](#)
[Stone Rounds](#)
[The Best Hits Bookshelf](#)

Media

Follow



[Receive notification of new cases,
sign up here](#)
[Contact Us](#)
[Submit a Suggestion](#)